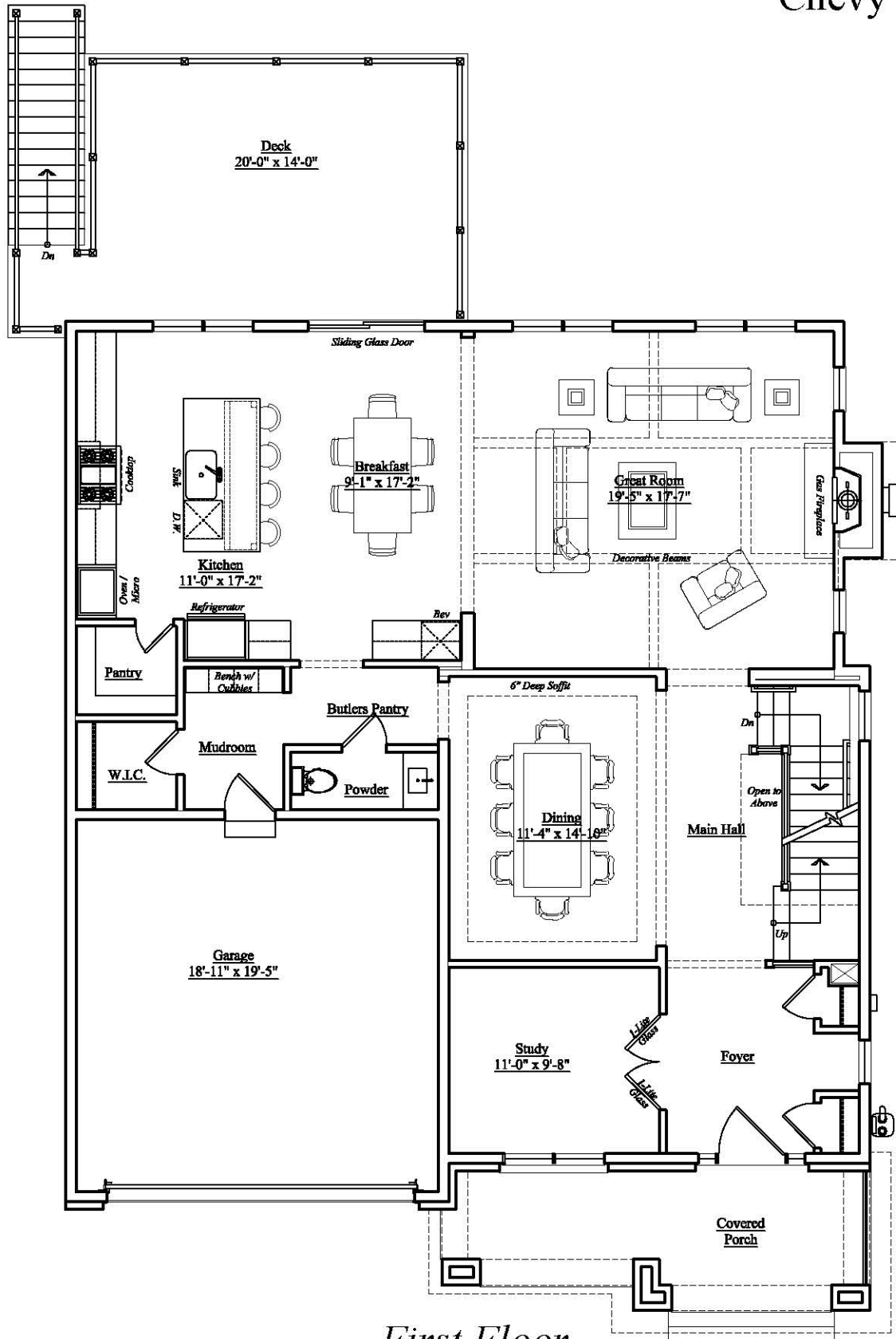


2726 Washington Ave.
Chevy Chase, MD



First Floor

Finished Area Above Grade: 1,486 sq. ft.

Deck: 298 sq. ft.

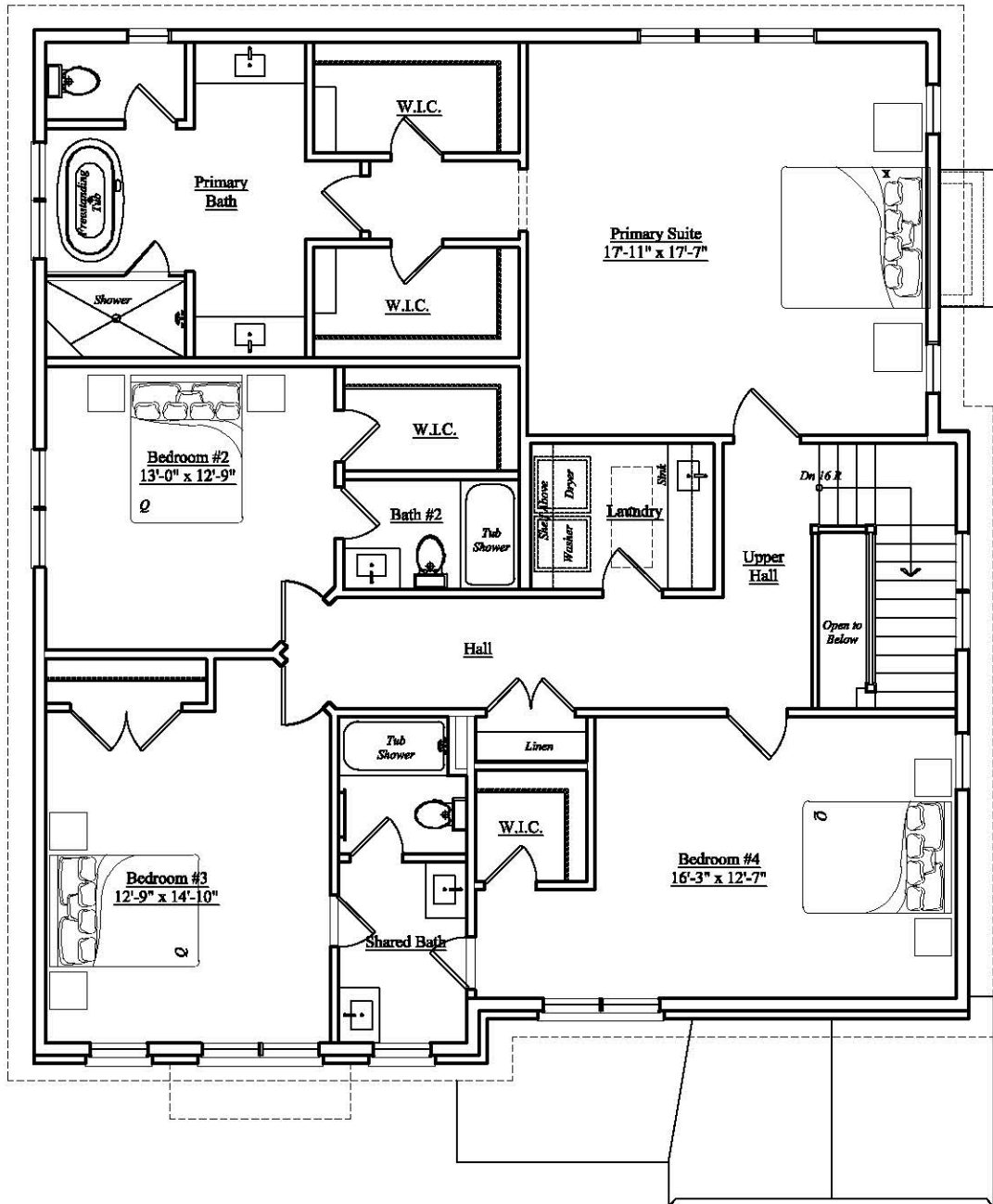
Garage: 389 sq. ft.

Finished square footage calculations for this house were made based on plan dimensions only and may vary from the finished square footage of the house as built. Areas calculated per the American National Standard For Single-Family Residential Buildings, Approved June 2013: ANSI Z765-2013



03/25/2024

W
WORMALD

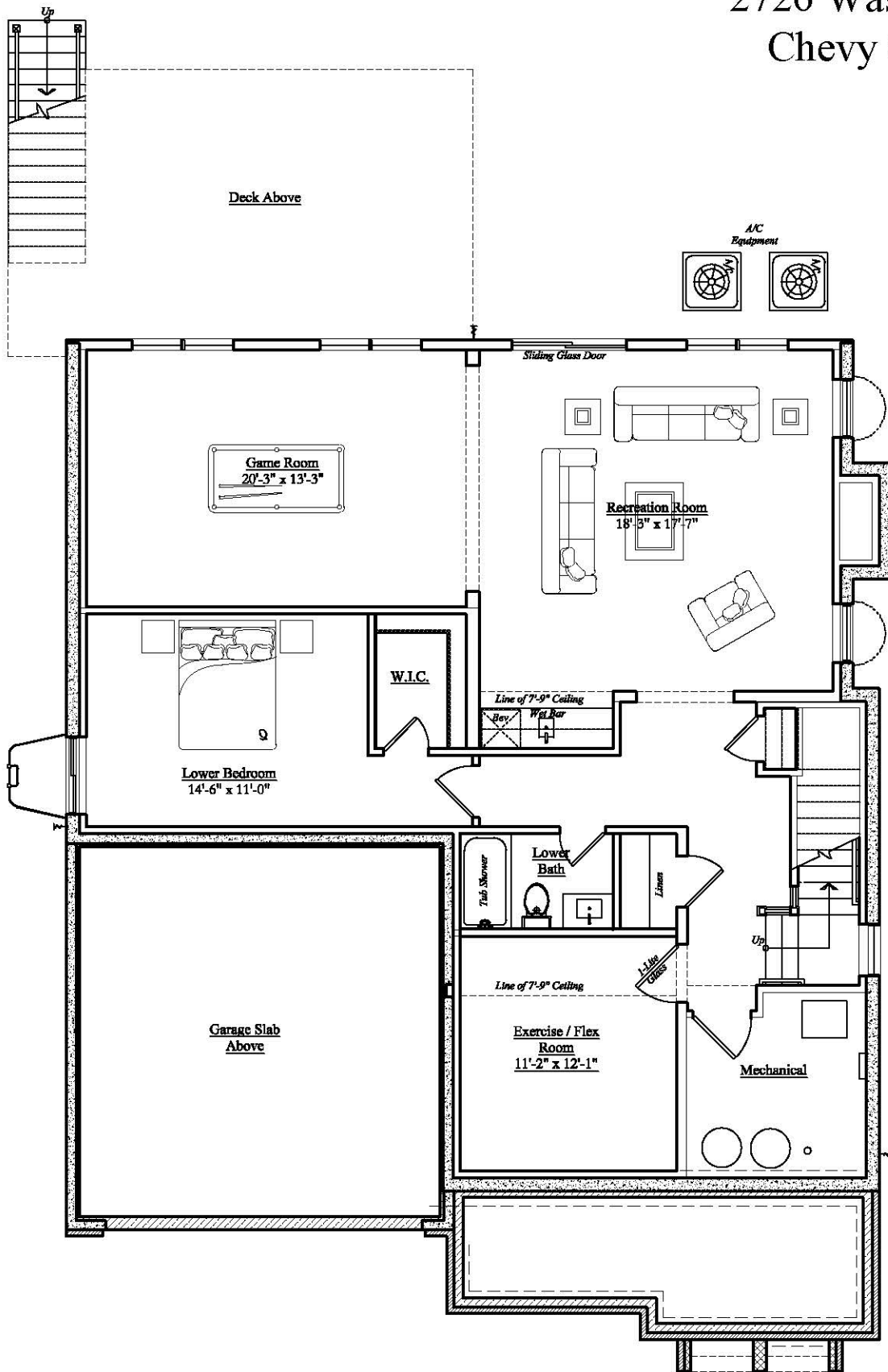


Second Floor

Finished Area Above Grade: 1,848 sq.ft.

Finished square footage calculations for this house were made based on plan dimensions only and may vary from the finished square footage of the house as built. Areas calculated per the American National Standard For Single-Family Residential Buildings, Approved June 2013: ANSI Z765-2013

2726 Washington Ave.
Chevy Chase, MD



Basement Level

Finished Area Below Grade: 1,384 sq. ft.

Unfinished Area Below Grade: 102 sq. ft.

Finished square footage calculations for this house were made based on plan dimensions only and may vary from the finished square footage of the house as built. Areas calculated per the American National Standard For Single-Family Residential Buildings, Approved June 2013: ANSI Z765-2013



03/25/2024

W
WORMALD